

MAXIM

TRUCK & TRAILER

Valid to October 31, 2020

Equipment, Parts & Service Specials

It's Never Been
Easier to Purchase an
International Truck

NO PAYMENTS
\$\$\$
6-MONTHS
\$\$\$
NO PAYMENTS

NEW & USED TRUCKS



New and Used Single Axle and Tandem Reefer Trucks.

SEE PAGE 10-17

ALL MAKES PARTS



DEF FLUID 9.46L JUG - \$10.50

SEE PAGE 24-25

NEW & USED TRAILERS



Timpco Grain Tandems, Tridems, and Super Bs.

SEE PAGE 22-23



ARNE'S



TF 1.877.466.2946

VISIT US ONLINE AT WWW.MAXIMINC.COM TO FIND A LOCATION NEAR YOU

MAXIM
TRUCK & TRAILER
SALES • LEASING • RENTALS • PARTS • SERVICE



DRIVING RELIABILITY



IC Bus® Dealers that have achieved Diamond Edge™ Certification provide their customers with accelerated service, a highly trained and informed workforce and greater parts availability. Their time to service your vehicle is continually measured and meets or exceeds existing benchmarks. Diamond Edge Certified Dealers are the pinnacle of IC Bus' industry-leading dealer network.

EXPERIENCE THE DIAMOND EDGE DIFFERENCE.



IC BUS. DRIVING OUR FUTURE.™



© 2019 IC Bus, LLC. All rights reserved. All marks are trademarks of their respective owners.



DIESEL BUS

**NEW 2021
International
CE-S-BUS**
Bus, Cummins B6.7,
200HP, 10,000/19,
800, 6Speed,
Allison (Auto),
Hydraulic Brakes,
276" Wheel Base,
Winnipeg
**CALL FOR
PRICE**

Stock #: 1496-21



GAS BUS

**NEW 2021
International
CE-S-BUS**
Bus, PSI 8.8L
Gasoline, 265HP,
10,000/19,800,
6Speed,
Allison (Auto),
Hydraulic Brakes, 276"
Wheel Base
Winnipeg
**CALL FOR
PRICE**

Stock #: 1497-21



BUY OR LEASE THIS UNIT

**NEW 2020
International
CV515 SFA
4X2**
Cab & Chassis,
International 6.6L,
350HP, 8,000/15,500,
6Speed, Allison
(Auto), Hydraulic
Brakes, 18kms, 231"
Wheel Base,
Winnipeg
\$89,000

Stock #: 1258-20



BUY OR LEASE THIS UNIT

**NEW 2020
International
CV515 SFA
4X4**
Cab & Chassis,
International 6.6L,
350HP, 7,500/15,500,
6Speed,
Allison (Auto),
Hydraulic Brakes,
16kms, 165" Wheel
Base,
Brandon
\$96,100

Stock #: 7584-20



BUY OR LEASE THIS UNIT

**NEW 2020
International
CV515SFA 4X4
Crew**
Cab & Chassis,
International 6.6L,
350HP, 7,500/15,500,
6Speed, Allison
(Auto), Hydraulic
Brakes, 12kms, 199"
Wheel Base
Regina
\$111,000

Stock #: 2837-20



BUY OR LEASE THIS UNIT

**NEW 2021
International
HV607 6x4**
Mixer Truck,
Cummins L9, 350HP,
18,000/40,000,
6Speed, Allison
(Auto), Air Brakes,
171kms, 205" Wheel
Base
Winnipeg
\$209,000

Stock #: 5902-21



BUY OR LEASE THIS UNIT

**NEW 2021
International
HV607 6x4**
Gravel Truck,
Cummins L9, 350HP,
16,000/40,000,
6Speed, Allison (Auto),
Air Brakes, 21kms,
187" Wheel Base
Winnipeg
\$174,900

Stock #: 2580-21



BUY OR LEASE THIS UNIT

**NEW 2020
International
CV515SFA 4X4
Crew**
Cab & Chassis,
International 6.6L,
350HP, 7,500/15,500,
6Speed, Allison
(Auto), Hydraulic
Brakes, 1,931kms,
199" Wheel Base
Winnipeg
\$111,000

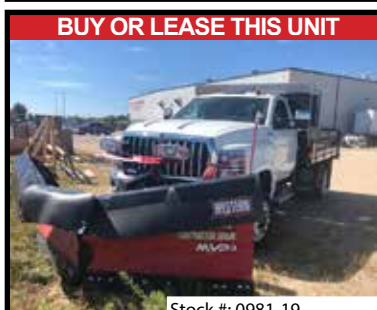
Stock #: 3330-20



BUY OR LEASE THIS UNIT

**NEW 2020
International
HV607 6x4**
Septic Truck,
Cummins L9, 330HP,
16,000/40,000
6Speed, Allison
(Auto), Air Brakes,
2,783kms, 209"
Wheel Base
Brandon
\$189,000

Stock #: 8145-20



BUY OR LEASE THIS UNIT

**NEW 2019
International
CV515 SFA
4X4**
Plow Truck,
International 6.6L,
350HP, 7,500/15,500,
6Speed, Allison (Auto),
Hydraulic Brakes,
4,000kms, 165" Wheel
Base,
Regina
\$135,000

Stock #: 0981-19

For more information call: TF 1.877.466.2946

BUY OR LEASE THIS UNIT



Stock #: 3523-21

**NEW 2021
International
HX520 6X4**
Sleeper Tractor,
Cummins X15, 565HP,
16,000/46,000, 18
Speed, Eaton Fuller
D/O, Air Brakes, 244"
Wheel Base, Hi-Rise
Thunder Bay
CALL FOR PRICE

BUY OR LEASE THIS UNIT



Stock #: 2456-21

**NEW 2021
International
HV607 6x4**
Gravel Truck,
Cummins L9, 350HP,
16,000/40,000,
6Speed, Allison (Auto),
Air Brakes, 3,230kms,
187" Wheel Base
Brandon
\$174,900

BUY OR LEASE THIS UNIT



Stock #: 3451-21

**NEW 2021
International
HX520 6X4**
Sleeper Tractor,
Cummins X15, 565HP,
16,000/46,000, 18
Speed, Eaton Fuller
D/O, Air Brakes, 244"
Wheel Base, Hi-Rise
Thunder Bay
CALL FOR PRICE

BUY OR LEASE THIS UNIT



Stock #: 5101-21

**NEW 2021
International
HV607 6x4**
Plow Truck,
Cummins L9, 370HP,
20,000/40,000,
6Speed, Allison
(Auto), Air Brakes,
215" Wheel Base
Thunder Bay
\$296,900

BUY OR LEASE THIS UNIT



Stock #: 1529-18

**NEW 2018
International
HX520 6X4**
Day Cab Tractor,
Cummins ISX, 500HP,
13,200/40,000, 18
Speed, Eaton Fuller
Ultra Shift, Air Brakes,
3,236kms, 236" Wheel
Base
Prince Albert
\$151,600

BUY OR LEASE THIS UNIT



Stock #: 2263-21

**NEW 2021
International
HX520 6X4**
Sleeper Tractor,
Cummins X15, 565HP,
12,000/46,000, 18
Speed, Eaton Fuller
D/O, Air Brakes,
19kms, 236" Wheel
Base Hi-Rise
Prince Albert
\$198,000

BUY OR LEASE THIS UNIT



Stock #: 4829-21

**NEW 2021
International
HX615 6X4**
Gravel Truck,
International A26,
475HP, 20,000/46,000,
6 Speed, Allison
(Auto), Air Brakes,
256" Wheel Base
Thunder Bay
CALL FOR PRICE

BUY OR LEASE THIS UNIT



Stock #: 5505-21

NEW 2021 International HX615 6X4
Day Cab Tractor, International A26, 500HP, 13,200/46,000, 18 Speed,
Eaton Fuller, Air Brakes, 3,638kms, 203" Wheel Base
Regina
\$174,200

BUY OR LEASE THIS UNIT



Stock #: 5050-19

**NEW 2019
International
MV607 4x2**
Dry Van, Cummins
B6.7, 260HP,
12,000/21,000,
75Speed, Eaton
Precision, Hydraulic
Brakes, 1,015kms,
266" Wheel Base,
Regina
\$136,000

For more information call: TF 1.877.466.2946

BUY OR LEASE THIS UNIT



Stock #: 6865-19

**NEW 2019
International
LoneStar 6x4**
Day Cab Tractor,
Cummins
X15, 565HP,
13,200/46,000, 18
Speed, Eaton Fuller
D/O, Air disc Brakes,
12kms, 215" Wheel
Base
Regina
\$164,900

BUY OR LEASE THIS UNIT



Stock #: 3259-20

**NEW 2020
International
HV607 6x4**
Gravel Truck,
Cummins L9, 350HP,
16,000/40,000,
6Speed, Allison
(Auto), Air Brakes,
2,081kms, 205"
Wheel Base,
Regina
\$163,000

BUY OR LEASE THIS UNIT



Stock #: 9845-21

**NEW 2021
International
HX620 6x4**
Gravel Truck,
Cummins X15, 485HP,
20,000/46,000, 18
Speed, Eaton Fuller
D/O, Air Brakes, 260"
Wheel Base
Thunder Bay
CALL FOR PRICE

BUY OR LEASE THIS UNIT



Stock #: 2525-20

**NEW 2020
International
Sleeper Tractor
Sleeper Tractor,
Cummins
X15, 565HP,
13,200/46,000, 18
Speed, Eaton Fuller
D/O, Air Brakes,
3,688kms, 244"
Wheel Base, Hi-Rise
Prince Albert
\$209,000**

BUY OR LEASE THIS UNIT



Stock #: 2524-20

**NEW 2020
International
LoneStar 6x4**
Sleeper Tractor,
Cummins X15, 565HP,
13,200/46,000, 18
Speed, Eaton Fuller
D/O, Air Brakes,
15kms, 244" Wheel
Base, Hi-Rise
Regina
\$209,000

BUY OR LEASE THIS UNIT



Stock #: 2172-19

**NEW 2019
International
LT625 6x4**
Day Cab Tractor,
International A26,
450HP, 12,350/40,000,
13 Speed, Eaton
Fuller Ultra Shift, Air
Brakes, 1,944kms,
189" Wheel Base
Winnipeg
\$143,700

BUY OR LEASE THIS UNIT



Stock #: 5548-19

**NEW 2019
International
LT625 6x4**
Day Cab Tractor,
Cummins
X15, 450HP,
12,350/40,000, 13
Speed, Eaton Fuller
Ultra Shift, Air Brakes,
18kms, 189" Wheel
Base
Brandon
\$147,400

BUY OR LEASE THIS UNIT



Stock #: 6918-19

NEW 2019 International LT625 6x4
Sleeper Tractor, International A26, 450HP, 12,350/40,000, 13 Speed,
Eaton Fuller Ultra Shift, Air Brakes, 24kms, 228" Wheel Base, Hi-Rise
Regina
\$160,800

BUY OR LEASE THIS UNIT



Stock #: 4566-19

**NEW 2019
International
LT625 6x4**
Day Cab Tractor,
Cummins X15, 500HP,
12,350/46,000, 18
Speed, Eaton Fuller
D/O, Air Brakes,
5,328kms, 189" Wheel
Base
Prince Albert
\$148,800

For more information call: TF 1.877.466.2946

SALES. SERVICE. PARTS



CAMLOCKS



LEVEL INDICATORS



VALVES



HOSES



PUMPS

IN STOCK UNITS AVAILABLE FOR IMMEDIATE DELIVERY

ALL NEW 2021 INTERNATIONAL MV Series Vacuum and Water Tanks

240HP Cummins B6.7 engine, Allison Automatic Transmission

AVAILABLE NOW!



2021 International MV607 4x2 1600 Gallon Vacuum Septic Tank

403LN Wallenstein pump, 24" rear access door, 3" fill & 6" dump with heated valves, 240 HP Cummins B6.7 engine, and an Allison automatic transmission.

In Stock Now \$147,700



2021 International MV607 4x2 1600 Gallon Potable Water Tank

135 GPM HYPRO pump, hydraulic drive, electric hose reel, insulated cabinet, 240 HP Cummins B6.7 engine, and an Allison automatic transmission.

In Stock Now \$161,500



2020 International HV607 6x4 3000 Gallon Vacuum Septic Tank

350HP Cummins L9 engine. Hendrickson Air ride suspension and Allison automatic transmission. 753 series liquid-cooled Wallenstein pump. 3" fill and 6" dump. Heated valves. 21" access door.

In Stock Now \$189,000



TF: (800) 573-5048 E: glendale@atomjet.com
glendale.atomjet.com

BUY OR LEASE THIS UNIT



Stock #: 8689-21

**NEW 2021
International
MV607 4x2**
Single Axle Water
Truck, Cummins
B6.7 engine (240)
HP, Allison (Auto)
transmission
(6 speed),
Hydraulic brakes,
12000/21000, A/C
**Brandon
CALL FOR
PRICE**

BUY OR LEASE THIS UNIT



Stock #: 5221-19

**NEW 2019
International
LT625 6X4**
Sleeper Tractor,
International
A26, 450HP,
12,350/40,000,
13Speed, Eaton Fuller
Ultra Shift, AirBrakes,
3,066kms, 228"
Wheel Base, Hi-Rise
**Winnipeg
\$169,000**

BUY OR LEASE THIS UNIT



Stock #: 5565-19

**NEW 2019
International
LT625 6X4**
Sleeper Tractor,
Cummins X15, 500HP,
12,350/46,000, 18
Speed, Eaton Fuller
D/O, Air Brakes,
3,964kms, 238" Wheel
Base, Hi-Rise
**Prince Albert
\$168,500**

BUY OR LEASE THIS UNIT



Stock #: 2717-20

**NEW 2020
International
LT625 6X4**
Sleeper Tractor,
International A26,
450HP, 12,350/40,000,
12 Speed, Eaton
Endurant, Air Brakes,
3,136kms, 228" Wheel
Base, Hi-Rise
**Winnipeg
\$182,500**

BUY OR LEASE THIS UNIT



Stock #: 2230-20

**NEW 2020
International
LT625 6X4**
Sleeper Tractor,
International A26,
450HP, 12,350/40,000,
13 Speed, Eaton
Fuller Ultra Shift, Air
Brakes, 3,291kms,
228" Wheel Base,
Hi-Rise
**Winnipeg
\$174,000**

BUY OR LEASE THIS UNIT



Stock #: 5937-19

**NEW 2019
International
LT625 6X4**
Sleeper
Tractor, Cummins
X15, 500HP,
12,350/40,000, 13
Speed, Eaton Fuller
Ultra Shift, Air disc
Brakes, 4,326kms,
228" Wheel Base,
Sky-Rise
**Winnipeg
\$173,200**

BUY OR LEASE THIS UNIT



Stock #: 1959-21

NEW 2021 International LT625 6X4
Sleeper Tractor, International A26, 450HP, 12,350/40,000, 12 Speed,
Eaton Endurant, Air Brakes, 3,169kms, 228" Wheel Base, Hi-Rise
**Winnipeg
\$198,000**

BUY OR LEASE THIS UNIT



Stock #: 8047-19

**NEW 2019
International
LT625 6X4**
Sleeper Tractor,
Cummins X15, 500HP,
12,350/40,000, 13
Speed, Eaton Fuller
Ultra Shift, Air disc
Brakes, 3,213kms,
228" Wheel Base,
Sky-Rise
**Winnipeg
\$172,200**

BUY OR LEASE THIS UNIT



Stock #: 3720-20

**NEW 2020
International
LT625 6X4**
Sleeper Tractor,
Cummins X15, 450HP,
12,350/40,000, 13
Speed, Eaton Fuller
D/O, Air Brakes,
3,236kms, 228" Wheel
Base, Sky-Rise
**Winnipeg
\$183,000**

For more information call: TF 1.877.466.2946



Quality & Innovation for 57 Years

Sales • Parts • Service

1-888-562-3470

www.grainmaster.mb.ca

The Key to Better Products Since 1963



Truck Bodies •  **HIRB** Cranes • Moffett Forklifts • Van Bodies & Gates

BUY OR LEASE THIS UNIT



Stock #: 6043-20

**NEW 2020
International
LT625 6x4**
Sleeper Tractor,
Cummins X15, 565HP,
14,000/46,000, 18
Speed, Eaton Fuller
D/O, Air disc Brakes,
3,454kms, 236" Wheel
Base, Hi-Rise
**Thunder Bay
\$202,700**

BUY OR LEASE THIS UNIT



Stock #: 2345-21

**NEW 2021
International
MV607 4x2**
Septic Truck,
Cummins B6.7,
240HP, 12,000/21,000,
6Speed, Allison (Auto),
Hydraulic Brakes, 187"
Wheel Base
**Brandon
\$147,700**

BUY OR LEASE THIS UNIT



Stock #: 8928-20

**NEW 2020
International
LT625 6x4**
Sleeper Tractor,
Cummins X15, 500HP,
13,200/40,000,
12 Speed, Eaton
Endurant, Air Brakes,
3,117kms, 236" Wheel
Base, Hi-Rise
**Winnipeg
\$205,100**

BUY OR LEASE THIS UNIT



Stock #: 3052-20

**NEW 2020
International
MV607 4x2**
Flat Deck, Cummins
B6.7, 280HP,
10,000/17,500, 6
Speed, Allison (Auto),
Hydraulic Brakes,
1,188kms, 242" Wheel
Base
**Regina
\$153,900**

BUY OR LEASE THIS UNIT



Stock #: 8517-21

**NEW 2021
International
LT625 6x4**
Tandem Axle Sleeper
Tractor, Cummins
X15 engine (500) HP,
Eaton Fuller D/O, 18
speed, Air brakes,
791km, 12350/40000,
4-Way rear lockup,
A/C, 73" Hi-Rise
sleeper
**Regina
\$206,000**

BUY OR LEASE THIS UNIT



Stock #: 4845-21

**NEW 2021
International
MV607 4x2**
Water Truck, Cummins
B6.7, 240HP,
12,000/21,000, 6
Speed, Allison (Auto),
Hydraulic Brakes, 187"
Wheel Base
**Brandon
\$156,600**

BUY OR LEASE THIS UNIT



Stock #: 3125-19-1

**NEW 2019
International
MV607 4x2**
Flat Deck, Cummins
B6.7, 260HP,
12,000/21,000, 6
Speed, Allison (Auto),
Hydraulic Brakes,
3,339kms, 230" Wheel
Base
**Brandon
\$131,000**

BUY OR LEASE THIS UNIT



Stock #: 5892-19

**NEW 2019
International
MV607 6x4**
Grain Truck,
Cummins L9, 350HP,
14,600/40,000,
6Speed, Allison (Auto),
Air Brakes, 2,264kms,
226" Wheel Base
**Prince Albert
\$158,000**

BUY OR LEASE THIS UNIT



Stock #: 2730-20

**NEW 2020
International
MV607 4x2**
Reefer Van, Cummins
B6.7, 260HP,
12,000/21,000, 6
Speed, Allison (Auto),
Hydraulic Brakes,
2,776kms, 266" Wheel
Base
**Winnipeg
\$185,000**

BUY OR LEASE THIS UNIT



Stock #: 4579-20

**NEW 2020
International
MV607 6x4**
Grain Truck,
Cummins L9, 350HP,
14,600/40,000, 6
Speed, Allison (Auto),
Air Brakes, 2,208kms,
226" Wheel Base
**Brandon
\$166,000**

For more information call: TF 1.877.466.2946



Stock #: 4418-08A

USED 2008 Peterbilt 330

Dry Van, Paccar, 200HP, 8,000/17,000, 6 Speed, Eaton Fuller, Hydraulic Brakes, 369,111kms,

Winnipeg
\$23,500



Stock #: 0905-96A

USED 1996 International 9200 6x4

Day Cab Tractor, Cummins M11, 12,000/40,000, 10 Speed, Meritor ZF, Air Brakes, 219" Wheel

Base
Regina
\$15,000



Stock #: 6417-13A

USED 2013 International Prostar Sleeper

Sleeper Tractor, MaxxForce 13, 475HP, 12,350/40,000, 13 Speed, Eaton Fuller Ultra Shift, Air Brakes, 1,035,755kms, 224" Wheel Base, Hi-Rise

Regina
\$24,500



Stock #: 5654-10A

USED 2010 Volvo VN630

Sleeper Tractor, Volvo, 435HP, 12,000/40,000, 18 Speed, Eaton Fuller D/O, ABS Brakes, 823,463kms, 238"

Wheel Base
Winnipeg
\$29,000



Stock #: 0502-02A

USED 2002 International 9200i 6x4

Cab & Chassis, Cat C12, 355HP, 14,000/40,000, 10 Speed, Eaton Fuller O/D, Air Brakes, 385,572kms, 173"

Wheel Base
Winnipeg
\$29,000



Stock #: 7558-10A

USED 2010 Freightliner Cascadia

Sleeper Tractor, Cummins ISX, 500HP, 12,000/44,000, 13 Speed, Eaton Fuller O/D, Air Brakes, 1,212,245kms,

Flat-Top
Brandon
\$32,500



Stock #: V251624

USED 2015 International 4400 4x2

Dry Van, N9, 300HP, 12,000/21,000, 6 Speed, Allison (Auto), Air Brakes, 373,725kms, 272"

Wheel Base
Montreal
\$33,500



Stock #: 9166-09A

USED 2009 International ProStar

Day Cab Tractor, Cummins ISX, 450HP, 12,000/40,000, 18 Speed, Eaton Fuller, Air Brakes, 625,000kms, 181"

Wheel Base,
Winnipeg
\$36,000



Stock #: 0453-13A

USED 2013 Kenworth T700

Sleeper Tractor, Paccar, 12,350/40,000, 13 Speed, Eaton Fuller D/O, Air Brakes, 1,253,305kms, 236"

Wheel Base, Sky-Rise
Winnipeg
\$39,750

For more information call: TF 1.877.466.2946



USED 2005 International 9400
Sleeper Tractor, Cummins ISX, 450 HP, 12,000/40,000, 10 Speed, Eaton Fuller, Air Brakes, 1,295,709kms, 236" Wheel Base, Hi-Rise
Regina
\$24,500

Stock #: 6084-05A



USED 2013 Volvo VN670
Sleeper Tractor, Volvo 13L, 450HP, 12,300/40,000, 12 Speed, Automatic, Air Brakes, 1,145,340kms
Winnipeg
\$39,900

Stock #: 4504-13A



Stock #: V463499

USED 2016 International Prostar Sleeper

Sleeper Tractor, N13, 450HP, 12,350/46,000, 18 Speed, Eaton Fuller Ultra Shift, Air Brakes, 961,276kms, 230" Wheel Base, Hi-Rise

Brandon
\$39,050



Stock #: V443357

USED 2014 International Prostar Daycab
Day Cab Tractor, N13, 475HP, 12,350/40,000, 18 Speed, Eaton Fuller D/O, Air Brakes, 457,510kms, 187" Wheel Base
Winnipeg
\$39,900



Stock #: V251634

USED 2015 International 4300 4x2

Dry Van, Cummins ISB, 260HP, 12,000/22,000, 6 Speed, Eaton Fuller, Air Brakes, 294,382kms, 266" Wheel Base
Mississauga
\$39,900



Stock #: 7570-07A

USED 2007 Kenworth T800

Sleeper Tractor, Cummins ISX, 475HP, 12,350/40,000, 18 Speed, Eaton Fuller O/D, Air Brakes, 1,095,235kms, 235" Wheel Base, Studio

Prince Albert
\$44,500



Stock #: 8431-11A

USED 2011 Freightliner Coronado

Sleeper Tractor, Detroit DD15, 565HP, 12,000/46,000, 18 Speed, Eaton Fuller O/D, Air Brakes, 1,407,403kms, 240" Wheel Base, Mid-Rise
Saskatoon
\$43,500



Stock #: V343349

USED 2014 International 8600 4X2
Day Cab Tractor, N13, 410HP, 12,000/23,000, 10 Speed, Eaton Fuller Ultra Shift, Air Brakes, 127,712kms, 156" Wheel Base
Regina
\$44,500

For more information call: TF 1.877.466.2946



Our truck-sized thank you.

You've put in countless hours on the road, getting the job done. We want to say thanks with the **Fountain Tire Truck Thru**, the first drive thru trucks can actually drive through.

For a chance to have one of our Truck Thrus bring free coffee and snacks to your truck yard, email corporatesales@fountaintire.com.

And don't forget to ask about our free **Goodyear Tire Optix Fleet Survey**.



Fountain Tire

We're
on this road
together.



**USED 2015
International
ProStar +122
ES**
Sleeper Tractor,
N13, 450HP,
12,350/40,000, 16
Speed, Eaton Fuller
Ultra Shift, Air Brakes,
632,808kms, 226"
Wheel Base, Hi-Rise
**Winnipeg
\$49,500**

Stock #: 3136-15A



Stock #: 5426-14A

USED 2014 MACK CH613
Sleeper Tractor, Mack, 500HP, 12,000/46,000, 18 Speed, Eaton Fuller
D/O, Air Brakes, 1,203,456kms, 226" Wheel Base, Flat-Top
**Regina
\$45,000**



**USED 2013
Kenworth T680**
Sleeper Tractor,
Paccar, 455HP,
12,350/40,000, 13
Speed, Eaton Fuller
D/O, Air Brakes,
900,895kms, 0" Wheel
Base, Sky-Rise
**Regina
\$49,500**

Stock #: 1742-13A



**USED 2006
Peterbilt 379**
Sleeper Tractor,
Cat C15, 475HP,
12,000/40,000, 13
Speed, Eaton Fuller
D/O, Air Brakes,
2,210,200kms, 244"
Wheel Base, Mid-Rise
**Saskatoon
\$49,900**

Stock #: 0218-06A



**USED 2015
International
Prostar
Daycab**
Day Cab Tractor,
Cummins ISX, 450HP,
13,200/40,000, 13
Speed, Eaton Fuller
D/O, Air Brakes,
969,495kms, 187"
Wheel Base
**Regina
\$59,200**

Stock #: V453426



**USED 2015
International
Prostar
Daycab**
Day Cab Tractor,
N13, 450HP,
12,350/40,000, 13
Speed, Eaton Fuller
D/O, Air Brakes,
164,060kms, 187"
Wheel Base
**Winnipeg
\$59,900**

Stock #: V453405A



**USED 2016
International
Prostar
Sleeper**
Sleeper Tractor,
Cummins ISX, 450HP,
12,350/40,000, 16
Speed, Eaton Fuller
Ultra Shift, Air Brakes,
805,648kms, 228"
Wheel Base, Hi-Rise
**Saskatoon
\$61,500**

Stock #: 4585-16A



**USED 2016
International
8600 6x4**
Day Cab Tractor,
N13, 390HP,
12,000/40,000, 13
Speed, Eaton Fuller
D/O, Air Brakes,
320,617kms, 171"
Wheel Base
**Winnipeg
\$65,750**

Stock #: V463556



**USED 2016
Volvo VNL 780**
Sleeper Tractor,
Volvo 13L, 500HP,
12,500/40,000, 18
Speed, Eaton Fuller
D/O, Air Brakes,
805,456kms, 238"
Wheel Base, Sky-Rise
**Brandon
\$65,900**

Stock #: 2020-16A

For more information call: TF 1.877.466.2946



**USED 2015
International
4300 4x2**
Reefer Van, Cummins
ISB, 250HP,
12,000/21,000, 6
Speed, Allison (Auto),
Hydraulic Brakes,
294,703kms, 254"
Wheel Base
Winnipeg
\$68,750

Stock #: V251595



**USED 2016
International
ProStar**
Sleeper Tractor,
Cummins ISX, 550HP,
13,200/46,000, 18
Speed, Eaton Fuller
D/O, Air Brakes,
765,126kms, 217"
Wheel Base, Hi-Rise
Regina
\$69,900

Stock #: 7544-16A



**USED 2017
International
ProStar Daycab**
Day Cab Tractor, N13,
430HP, 12,000/40,000,
13 Speed, Eaton
Fuller D/O, Air Brakes,
376,177kms, 175"
Wheel Base
Calgary
\$71,500

Stock #: V473599



**USED 2016
International
ProStar Daycab**
Day Cab Tractor,
Cummins ISX, 450HP,
13,200/40,000, 13
Speed, Eaton Fuller
D/O, Air Brakes,
769,736kms, 185"
Wheel Base
Winnipeg
\$74,750

Stock #: V463531



**USED 2016
International
4400 4x2**
Gravel Truck, N9,
330HP, 13,000/22,000,
6 Speed, Allison
(Auto), Air Brakes,
280,381kms, 215"
Wheel Base
Winnipeg
\$75,500

Stock #: V261675



**USED 2016
Kenworth T800**
Sleeper Tractor,
Paccar, 500HP,
16,000/46,000, 18
Speed, Eaton Fuller
D/O, Air Brakes,
589,000kms, 244"
Wheel Base, Mid-Rise
Regina
\$77,500

Stock #: 8337-16A



USED 2009 International ProStar Premium
Grain Truck, Cummins ISX, 485HP, 14,000/46,000, 18 Speed,
Automatic, Air Brakes, 799,000kms, 238" Wheel Base
Brandon
\$77,850

Stock #: 7190-09A



**USED 2017
International
4300 SBA 4X2**
Dry Van, Cummins
ISB, 12,000/21,000, 6
Speed, Allison (Auto),
Hydraulic Brakes,
238,209kms, 266"
Wheel Base
Regina
\$79,900

Stock #: 7414-17A



**USED 2017
International
4300 4x2**
Reefer Van, Cummins
ISB, 260HP,
12,000/21,000, 6
Speed, Allison (Auto),
Hydraulic Brakes,
399,317kms, 254"
Wheel Base
Winnipeg
\$79,900

Stock #: V271746

For more information call: TF 1.877.466.2946



**USED 2016
International
4300 4x2**

Dry Van, Cummins
ISB, 260HP,
12,000/21,000, 6
Speed, Allison (Auto),
Hydraulic Brakes,
259,890kms, 254"

Wheel Base
Regina

\$87,000

Stock #: 261707



**USED 2014
International
ProStar**

Grain Truck,
Cummins ISX, 450HP,
12,350/40,000,
10 Speed, Eaton
Fuller, Air Brakes,
866,857kms, 238"

Wheel Base
Saskatoon

\$92,500

Stock #: V443309



Stock #: 271747

USED 2017 International 4300 4x2

Dry Van, Cummins ISB, 260HP, 12,000/21,000, 6 Speed, Allison
(Auto), Hydraulic Brakes, 257,476kms, 254" Wheel Base

Calgary

\$89,750



Stock #: V443502

**USED 2014
International
ProStar +122**

Grain Truck, Cummins
ISX, 485HP, 13,
200/40,000, 13
Speed, Eaton Fuller
Ultra Shift, Air Brakes,
808,866kms, 238"

Wheel Base
Brandon

\$99,900



Stock #: V251605

**USED 2015
International
4400 6x4**

Gravel Truck,
N9, 315HP,
14,000/40,000,
6 Speed, Allison
(Auto), Air Brakes,
260,909kms, 254"

Wheel Base
Winnipeg

\$99,900



Stock #: 281859

USED 2018 International 4300 4x2

Dry Van, Cummins B6.7, 260HP, 12,000/21,000, 6 Speed, Allison
(Auto), Hydraulic Brakes, 26,260kms, 266" Wheel Base

Delta

\$115,900



Stock #: V271796

**USED 2017
International
4400 6x4**

Reefer Van,
N9, 330HP,
14,000/40,000,
6 Speed, Allison
(Auto), Air Brakes,
197,306kms, 256"

Wheel Base
Mississauga

\$99,900



Stock #: 281872

**USED 2018
International
4300 4x2**

Dry Van, Cummins
B6.7, 260HP,
12,000/21,000, 6
Speed, Allison (Auto),
Hydraulic Brakes,
108,329kms, 266"

Wheel Base
Edmonton

\$117,900

For more information call: TF 1.877.466.2946



Stock #: 483690

**USED 2018
International
LT625 Sleeper**

Sleeper Tractor,
Cummins X15, 500HP,
13,200/46,000, 18
Speed, Eaton Fuller
Ultra Shift, Air Brakes,
506,678kms, 236"
Wheel Base, Hi-Rise

**Calgary
\$119,750**



Stock #: 271725

**USED 2017
International
4300 4x2**

Dry Van, Cummins
ISB, 260HP,
12,000/21,000, 6
Speed, Allison (Auto),
Hydraulic Brakes,
271,895kms, 266"

**Wheel Base
Mississauga
\$119,900**



Stock #: 483688

**USED 2018
International
LT625 Sleeper**

Sleeper Tractor,
Cummins X15, 450HP,
13,200/46,000, 18
Speed, Eaton Fuller
D/O, Air Brakes,
355,360kms, 236"
Wheel Base, Hi-Rise

**Delta
\$121,200**



Stock #: 483784

**USED 2018
International
LT625 Sleeper**

Sleeper Tractor,
Cummins X15, 500HP,
13,200/46,000, 18
Speed, Eaton Fuller
Ultra Shift, Air Brakes,
269,789kms, 236"
Wheel Base, Hi-Rise

**Edmonton
\$126,900**



Stock #: 483781

**USED 2018
International
LT625 Sleeper**

Sleeper Tractor,
Cummins
X15, 565HP,
13,200/46,000, 18
Speed, Eaton Fuller
D/O, Air Brakes,
408,983kms, 228"

**Wheel Base, Hi-Rise
Prince Albert
\$123,250**



Stock #: V271815

**USED 2017
International
4300 4x2**

Reefer Van, Cummins
ISB, 260HP,
12,000/21,000, 6
Speed, Allison (Auto),
Hydraulic Brakes,
151,500kms, 266"

**Wheel Base
Winnipeg
\$131,500**



Stock #: 483801

**USED 2018
International
LT625 Daycab**

Day Cab Tractor,
Cummins
X15, 450HP,
12,350/40,000, 13
Speed, Eaton Fuller
Ultra Shift, Air Brakes,
115,024kms, 173"

**Wheel Base
Delta
\$129,900**



Stock #: 281843

USED 2018 International 4400 6x4

Reefer Van, Cummins L9, 350HP, 14,000/40,000, 6 Speed, Allison
(Auto), Air Brakes, 138,908kms, 256" Wheel Base

**Delta
\$144,550**



Stock #: 493955

**USED 2019
International
LT625 Daycab**

Day Cab Tractor,
Cummins
X15, 500HP,
14,000/46,000, 18
Speed, Eaton Fuller
Ultra Shift, Air Brakes,
111,074kms, 189"

**Wheel Base
Saskatoon
\$135,000**

For more information call: TF 1.877.466.2946

Great

puts you in command



Isn't it time telematics did more? More than just GPS, FleetPulse is a robust, powerful platform that increases uptime by delivering fleet data and insights in a single integrated solution so that you're always connected and in command.

Fleet-Pulse.com

FleetPulse™
by **Great Dane**

Great Dane, FleetPulse, and the oval are registered trademarks of Great Dane LLC. 745 DMD 1019



Stock #: LA001013

NEW BWS Super B Deck

Deck, Super B Lead, Air suspension, Tridem axle, Steel rims, 36" king pin, Winches:
18 3-Bar, Height: 32.0ft, Width: 102in, Length: 32ft, Rear Trailer = LA001016

Winnipeg MB

\$73,900



Stock #: KA001537

NEW BWS Tridem Low Bed

Deck, Low Bed, Air suspension, Tridem axle, Steel rims, 1 position drop-in King Pin 1 king pin, Height: 52.1ft, Width: 108in, Length: 52ft

Winnipeg MB

CALL FOR PRICE



Stock #: KR067434

NEW East Tandem Dropdeck

Deck, Alum Stepdeck, Air suspension, Tandem axle, Aluminum rims, 24" NO PICK UP RAMP GRD 50 STE king pin, Winches: 24 3-Bar, Height: 53.0ft, Width: 102in, Length: 53ft

Saskatoon SK

CALL FOR PRICE



Stock #: KR067429

NEW East Tandem Flatdeck

Deck, Alum Flatdeck, Air suspension, Tandem axle, Aluminum rims, 24" GRD STEEL-1/4" NO PICK UP king pin, Winches: 24 3-Bar, Height: 53.0ft, Width: 102in, Length: 53ft, AMVIC Licensed Dealer

Calgary AB

CALL FOR PRICE



Stock #: LH185046

NEW Great Dane Steel Stepdeck

Deck, Steel Stepdeck, Air suspension, Tridem axle, Steel rims, Wood floor, 30 king pin, Winches: 22 Slot w/ "C" Hooks, Height: 53.0ft, Width: 102in, Length: 53ft

Winnipeg MB

CALL FOR PRICE



Stock #: LR071184

NEW East Tridem Stepdeck

Deck, Alum Stepdeck, Air suspension, Tridem axle, Aluminum rims, Aluminum floor, 18" king pin, Winches: 22 Sliding 3-Bar, Height: 53.0ft, Width: 102in, Length: 53ft, AMVIC Licensed Dealer

Calgary AB

CALL FOR PRICE



Stock #: LH152476

NEW Great Dane Tridem Dropdeck

Deck, Combo Stepdeck, Air suspension, Tridem axle, Steel rims, alum 1.25" w/4 apitong nail st floor, 24" king pin, Winches: 26 Canadian Style 3-Bar, Height: 53.0ft, Width: 102in, Length: 53ft

Winnipeg MB

CALL FOR PRICE



Stock #: KH135162

NEW Great Dane Tridem Flatdeck

Deck, Steel Flatdeck, Air suspension, Tridem axle, Steel with 5 hand holes rims, APITONG 1.13" floor, 24" king pin, Winches: 22 Fixed 3-Bar, Height: 53.0ft, Width: 102in, Length: 53ft

Brandon MB

CALL FOR PRICE



Stock #: MB306399

NEW Great Dane Tandem Dry Van

Dry Van, Air suspension, Tandem axle, Aluminum rims, Wood floor, 36 king pin, Aluminum roof, Logistic posts side posts, Height: 53.0ft, Width: 102in, Length: 53ft, Hendrickson

TIREMAAX PRO

Winnipeg MB

CALL FOR PRICE

For more information call: TF 1.877.466.2946



Stock #: KB162778

NEW Timpfe Tandem Grain Hopper

Grain, 3 hopper, Air suspension, Tridem axle, Aluminum (polished out) rims, 20 king pin, Tarp: Rollover Black, Hoppers: Ag Hopper w/3rd Hopper Black w/Interior Access steps, Height: 45.0ft, Width: 102in, Length: 45ft

Brandon MB

\$47,900 US



Stock #: MB167990

NEW Timpfe Tandem Grain Hopper

Grain, 2 hopper, Air suspension, Tandem axle, Aluminum rims, Tarp: Rollover Black, Hoppers: Ag Hopper Black w/Interior Access steps, Height: 40.0ft, Width: 102in, Length: 40ft

**Winnipeg MB
CALL FOR PRICE**



Stock #: MB168954

NEW Timpfe Tandem Grain Hopper

Grain, 2 hopper, Air suspension, Tandem axle, Aluminum rims, Tarp: Rollover Black, Hoppers: Ag Hopper Black w/Interior Access steps, Height: 40.0ft, Width: 102in, Length: 40ft, Hendrickson suspension

**Winnipeg MB
CALL FOR PRICE**



Stock #: KA003723

NEW Arne's Cross Gate Hopper

Gravel, Cross Gate, Air suspension, Tridem axle, Steel rims, 20 king pin, 2 x 6 planks, Tarp: None N/A, Height: 37.0ft, Width: 102in, Length: 37ft, Prepared for future cable tarp, LED lights

Saskatoon SK

CALL FOR PRICE



Stock #: LB166973

NEW Timpfe Tridem Grain Hopper

Grain, 2 hopper, Air suspension, Tandem axle, Aluminum/Steel rims, Tarp: Rollover Black, Hoppers: Ag Hopper Black w/Interior Access, 5 Steps steps, Height: 36.0ft, Width: 102in, Length: 36ft

**Regina, SK
CALL FOR PRICE**



Stock #: KA003728

NEW Arne's Cross Gate Hopper

Gravel, Cross Gate, Air suspension, Tridem axle, Steel rims, 20 king pin, 2 x 6 planks, Tarp: None N/A, Height: 37.0ft, Width: 102in, Length: 37ft, Prepared for future cable tarp, LED lights

**Winnipeg MB
CALL FOR PRICE**



Stock #: MA003137

NEW Arne's Tandem End Dump

Gravel, End Dump, Air suspension, Tandem axle, Steel rims, 15 king pin, 2 x 6 planks, Height: 37.0ft, Width: 102in, Length: 37ft, NEW DESIGN, FLAT FRONT AND SMOOTH TAILGATE

**Winnipeg MB
CALL FOR PRICE**



Stock #: KA003526

NEW Arne's Super B Side Dump

Gravel, Side Dump Rear, Air suspension, Tandem axle, Steel rims, 15 king pin, None planks, Tarp: Electric Flip Black

**Saskatoon SK
CALL FOR PRICE**

For more information call: TF 1.877.466.2946

*Great Dane*

Great *goes the distance*

For some, going the extra mile is a rarity. But for others, it's what makes us great. Over a century ago, we made a commitment to stand by our customers and our products, on and off the road. Because for us, going the extra mile isn't an exception, it's the rule. ***Great Doesn't Stop.***

GreatDane.com

Great Dane and The Oval are registered trademarks of Great Dane LLC. 742 DMD 0319



NEW Arne's Tridem Advantage Cross Gate Hopper
Gravel, Advantage Cross Gate, Air suspension, Tridem axle, Steel rims, 15 king pin, 2 x 12 planks, Tarp: Mesh Cable Black, Height: 40.0ft, Width: 102in, Length: 40ft, mudflaps, mesh cable tarp w/12" hoops, led lights
Winnipeg MB
CALL FOR PRICE

Stock #: MA003083



NEW Arne's Tridem End Dump
Gravel, End Dump, Air suspension, Tridem axle, Steel rims, 15 king pin, 2 x 6 planks, Tarp: Vinyl Cable Red, Height: 37.0ft, Width: 102in, Length: 37ft, Square box, red cable tarp, LED lights
Winnipeg MB
CALL FOR PRICE

Stock #: 10144



NEW Trout River Shuttle Floor
Gravel, Shuttle Floor, Air suspension, Tridem axle, Aluminum rims, SHUTTLE floor, Tarp: Michel's, Height: 53.0ft, Width: 102in, Length: 53ft, AMVIC Licensed Dealer
Calgary AB
\$127,900

Stock #: JW134358



NEW Trout River Tridem Live Bottom
Gravel, Live Bottom, Air suspension, Tridem axle, Aluminum rims, None planks, Tarp: Mesh Cable Black, Height: 42.0ft, Width: 102in, Length: 42ft, RELEASE AGENT TANK, AMVIC Licensed Dealer
Calgary AB
\$95,900

Stock #: HA003260



NEW Great Dane Tandem Reefer Van
Reefer Van, Air suspension, Tandem axle, Aluminum/Steel rims, Alum Duct 1.38" smooth floor, 36 king pin, .070 PunctureGuard lining, Aluminum roof, Height: 53.0ft, Width: 102in, Length: 53ft
Delta BC
CALL FOR PRICE

Stock #: LW214842



Stock #: KW134594

NEW Trout River Quad Live Bottom
Gravel, Live Bottom, suspension, Quad axle, Aluminum rims, Live Bottom floor, Tarp: Electric Flip, Height: 48.0ft, Width: 102in, Length: 48ft, 71.5" spread & steer lift axle
Thunder Bay ON
CALL FOR PRICE



NEW Trout River SC-39-S2
Gravel, Live Bottom, suspension, Tridem axle, Aluminum rims, Live Bottom floor, Tarp: Electric Flip Black, Height: 39.0ft, Width: 102in, Length: 39ft, 72" spread and steer lift axle
Thunder Bay ON
CALL FOR PRICE

Stock #: KW134503



NEW Great Dane Tandem Heater Van
Heater Van, suspension, Tandem axle, Steel rims, WOOD floor, 36 king pin, Aluminum roof, Height: 53.0ft, Width: 102in, Length: 53ft, 1 ROW OF LOGISTICS TRACK
Winnipeg MB
CALL FOR PRICE

Stock #: LB201241



NEW Great Dane Tridem Heater Van
Heater Van, Air suspension, Tridem axle, Outside Aluminum/Inside Steel rims, Wood floor, 36 king pin, Aluminum roof, Single Slot Logistic side posts, Height: 53.0ft, Width: 102in, Length: 53ft, 3 Interior Ceiling Lights, SSL
Winnipeg MB
CALL FOR PRICE

Stock #: LB201230

For more information call: TF 1.877.466.2946



Stock #: V653897

USED 2015 Great Dane Flat Deck

Deck, Flatdeck, Air suspension, Tridem axle, Steel with 5 hand holes rims, APITONG 1.13" floor, 24" king pin, Winches: 22 Fixed 3-Bar, Height: 53.0ft, Width: 102in, Length: 53ft, AMVIC Licensed Dealer

**Edmonton AB
\$37,500**



Stock #: 7L046494U

USED 2007 Lode King Flatdeck

Deck, Combo Flatdeck, Air suspension, Tandem axle, Steel rims, Wood floor, Winches: 27 Sliding 3-Bar, Height: 53.0ft, Width: 102in, Length: 53ft, Sliding "C" Hooks Opposite Winches

**Winnipeg MB
\$12,900**



Stock #: 7L046495U

USED 2007 Lode King Flatdeck

Deck, Combo Flatdeck, Air suspension, Tandem axle, Steel rims, Wood floor, Winches: 27 Sliding 3-Bar, Height: 53.0ft, Width: 102in, Length: 53ft, Sliding "C" Hooks Opposite Winches

**Winnipeg MB
\$12,900**



Stock #: FF059617U

USED 2015 Lode King Grain

Grain, Super B Lead, Air suspension, Tridem axle, Steel rims, Tarp: Rollover Black, Hoppers: Ag Hopper Black, Height: 28.0ft, Width: 102in, Length: 28ft, Sold as set w/ unit

FF059618U
**Brandon MB
\$62,900**



Stock #: V693300

USED 2009 Great Dane 30' Reefer Van

Reefer Van, Air suspension, Tandem axle, Steel rims, 1.32" hvy duty alum floor, 24" king pin, Aluminum roof, Height: 30.0ft, Width: 102in, Length: 30ft

**Winnipeg MB
\$17,500**



Stock #: 6W705538U

USED 2006 Great Dane Tandem Reefer

Reefer Van, Air suspension, Tandem axle, Reefer: Thermo King, Aluminum rims, Alum Duct floor, 30 king pin, Aluminum roof, Height: 53.0ft, Width: 102in, Length: 53ft

**Saskatoon SK
\$14,500**



Stock #: ET330201U

USED 2014 Hyundai Translead Tandem Heater Van

Heater Van, Air suspension, Tandem axle, Aluminum rims, Wood floor, Aluminum roof, Height: 53.0ft, Width: 102in, Length: 53ft

**Saskatoon SK
\$2,6500**



Stock #: GA003785U

USED 2016 Arne's Side Dump Lead

Gravel, Side Dump Lead, Air suspension, Tridem axle, Aluminum rims, 15 king pin, Tarp: Electric Flip Black, Height: 36.0ft, Width: 102in, Length: 36ft, Lead Unit - sold w/ Rear unit

**Regina SK
\$79,900**

For more information call: TF 1.877.466.2946



**USED 1984
Fruehauf
Storage**

Storage, suspension,
Single axle, Steel
rims, Wood floor,
Aluminum roof,
Height: 28.0ft, Width:
102in, Length: 28ft,
Insulated, AMVIC
Licensed Dealer
Edmonton AB

\$2,750

Stock #: ES043402U



**USED 1987
Fruehauf
Storage**

Storage, suspension,
Tandem axle,
Steel rims, Wood
floor, Aluminum
roof, Height:
53.0ft, Width:
102in, Length: 53ft
Saskatoon SK

\$4,900

Stock #: HS062102U



**USED 2007
Kidron
Storage Van**

Storage, suspension,
Tridem axle, Steel
rims, Flat Grocery
Floor floor, Height:
48.0ft, Width:
102in, Length:
48ft, AMVIC
Licensed Dealer
Edmonton AB

\$4,900

Stock #: 74054372U



**USED 2009
Kidron
Storage Van**

Storage, suspension,
Tridem axle, Steel
rims, Flat Floor floor,
Aluminum roof,
Height: 48.0ft, Width:
102in, Length: 48ft,
2 C/S Side Doors,
AMVIC Licensed
Dealer
Edmonton AB

\$4,900

Stock #: 94054107U



**USED 1997
Strick Storage
Van**

Storage, suspension,
Single axle, Steel
rims, Wood floor,
Height: 28.0ft,
Length: 28ft,
AMVIC Licensed
Dealer
Calgary AB

\$1,500

Stock #: VE420900U



**USED 1987
Trailmobile
Storage Van**

Storage, suspension,
Single axle, Steel
rims, Wood floor,
Aluminum roof,
Height: 28.0ft, Width:
102in, Length: 28ft,
AMVIC Licensed
Dealer
Calgary AB

\$990

Stock #: H9004218U



**4
UNITS
AVAILABLE**

**USED 2013 Great
Dane Dry Van**

Dry Van, Air suspension,
Tandem axle, Steel rims,
Wood floor, Aluminum
roof, Log Posts side posts,
Height: 53.0ft, Width: 102in,
Length: 53ft

Winnipeg MB

\$23,500

Stock #: DT578980U

For more information call: TF 1.877.466.2946



MAXIM HEAVY DUTY PARTS

NEW PARTS

shop.maximinc.com



24" SUMMER WIPER BLADE

Anco Wiper Blades

STOCK #: ANCO3124B10

\$6.75



VALVE DASH CONTROL

Bendix New

STOCK #: BX800257

\$349.95



CLUTCH BRAKE 2"

Clutches

STOCK #: C127200

\$35.95



WHITE LITHIUM GREASE 284 GR

CRC Canada Co.

STOCK #: 14200

\$9.25



CAM,RH,158X28SPLINE 24.06

Dayton Parts

STOCK #: 04-562411

\$42.50



CAM,LH,158X28SPLINE 24.06

Dayton Parts

STOCK #: 04-562412

\$42.50



MOTOR STARTER 39 MT, 12V

Delco Remy Reman

STOCK #: 8200308

\$475.00



SEAL TEFLON OIL BATH

Federal Mogul

STOCK #: V380023A

\$45.95



ALTERNATOR 28SI 200A PAD MOUNT

Delco Remy Reman

STOCK #: 8600314

\$475.00



MUDFLAP BRACKET,1 ARM

Fleet Engineers

STOCK #: ZFA03400426

\$14.95



AIR SPRING, HEND TRAILER

Fleetrite - Air Bags

STOCK #: FLTA1R13119

\$134.95



CHAMBER,COMPL 3030 STD ROD

Fleetrite - Brakes

STOCK #: FLT3030SCB20

\$39.99

FREE SHIPPING

FREE Purolator Ground Shipping on orders of \$100 or more



MUFFLER 5IN/5OUT

Fleetrite - Exhaust

STOCK #: FLT5510EM

\$84.99


SENSOR, ABS R955335

WABCO

STOCK #: WAB4410309072

\$48.95


CLAMP 4 V-BAND STA

Fleetrite - Exhaust

STOCK #: FLTEC40VBS

\$28.75


SYNTHETIC ATF

ALLISON TES 29

Fleetrite - Fluid

STOCK #: FLTATF295G

\$72.95


CAB FILTER 95-2003

Freudenberg Micronair

STOCK #: IN9501P

\$5.25


HEADLAMP, 4LAMP

RECT L/BEAM

General Electric

STOCK #: GEDH4656

\$7.95


HOSE RADIATOR 2 1/2

Goodyear - PDC

STOCK #: GY57240

47.50/ft


LAMP, RED LED 4S/T/T

Grote Industries Co.

STOCK #: 53252

\$15.99


SLACK ADJUSTER,

AUTO 1 1/2-28

Haldex - Navistar

STOCK #: HAL40010211

\$109.95


BINDER, CHAIN

RATCHET 516-38

Kinedyne Canada Ltd.

STOCK #: 10035

\$29.50


BRAKE ROTOR

Meritor - Drum Rotor Hub

STOCK #: 23123552009

\$184.95


DISC BRAKE PADS

Silverback Disc Pads

STOCK #: D225-7808CE

\$52.95


DEF FLUID 9.46L JUG -

WHILE SUPPLIES LAST

Brenntag

STOCK #: 80301

\$10.50

FREE SHIPPING

FREE Purolator Ground
Shipping on orders of
\$100 or more



TIMKEN

**Self-Aligning Center
Support Bearing**

Designed for Reliable and Durable Performance.

Timken® Driveline Center Support Bearings for Commercial Vehicles

Timken delivers reliability and durability with our driveline center support bearings (frequently referred to as “hanger bearings”). Easy to install, Timken driveline center support bearings interchange with all major truck applications to help improve your fleet’s uptime.

RELIABLE: Bearing inserts are pre-greased and pre-sealed with an additional grease barrier between the bearing retainer caps and sealed bearing to help extend bearing life.

DURABLE: Heavy-duty bracket made from reinforced heavy-gauge cold-rolled steel imparts strength and durability, and the rubber cushion provides support while it absorbs and isolates vibrations, which helps extend service life in rough environments and simplifying installation.

PERFORMANCE: Driveline center support bearings are rigorously inspected to meet Timken performance and quality standards.

INTERCHANGEABLE: Driveline center support bearings interchange with all major truck applications for easy installation and dependable uptime.



Part #:	Price
TMSET413	\$38.81
TMSET414	\$58.44
TM12Y46250	\$25.79
TM12P46250	\$26.40
TM210661-1XSA	\$70.63

*Replaces
5003323 spicer
CB210661-1XSA
Meritor*

CALL MAXIM DIRECT PARTS LINES:

THUNDER BAY
807.344.5834

BRANDON
204 725.4580

PRINCE ALBERT
306 922.5833

WINNIPEG (TRUCK PARTS)
204 790.6575

REGINA
306 721.0006

CALGARY
403 571.1144

WINNIPEG (TRAILER PARTS)
204 790.6597

SASKATOON
306 657.5615

EDMONTON
780 413.6261

MAXIM PARTNER HIGHLIGHT



FAN CLUTCHES

With over 5,000 inch-pounds of torque,
Fleetrite fan clutches will handle nearly any fan blade!



Innovative design that will **AUTOMATICALLY LOCK UP** fan clutches when the friction material nears the end of its life.

On/Off Fan Clutch Kit

- Highest torque rating
- Higher quality internal components
- Lower cost

FLT14256 - On/Off Kit (Two pulley bearings) - **\$527.83**

FLT142561 - On/Off Kit (One pulley bearing) - **\$559.57**

**2-Speed Fan Clutch Kit**

- Reduces the frequency of fan clutch engagements
- Improved Fuel Economy

FLT24256 - 2-Speed Kit (Two pulley bearings) - **\$907.42**

FLT242561 - 2-Speed Kit (One pulley bearing) - **\$893.51**

Fleetrite fan clutches have a
3 year / 300,000 Mile Warranty

**REMANUFACTURED FAN CLUTCHES AVAILABLE**

Better than new quality at a fraction of the price

Backed by an industry-best warranty

PRE-2001 FAN CLUTCH REBUILD KITS

- U.S. Components and U.S. Manufactured
- Two Bearing Hub vs. One Bearing Hub Design
- Premium Quality Lining

FLT9500HP - 9.5" Friction Plate - **\$408.34**

FLT7500HP - 7.5" Friction Plate - **\$408.34**

**CALL MAXIM DIRECT PARTS LINES:****THUNDER BAY**

807.344.5834

BRANDON

204 725.4580

PRINCE ALBERT

306 922.5833

WINNIPEG (TRUCK PARTS)

204 790.6575

REGINA

306 721.0006

CALGARY

403 571.1144

WINNIPEG (TRAILER PARTS)

204 790.6597

SASKATOON

306 657.5615

EDMONTON

780 413.6261



PRODUCT	PART #	SIZE	PRICE
5th WHEEL GREASE	GRGRZ0037	35LB PAIL	\$113.55
15W40 SYN BLEND MS-X PLUS	DMOSZ0034	205L	\$854.00
	DMOSZ0019	20L	\$92.95
	DMOSZ0009	4X4L	\$18.25
FULL SYNTHETIC SUPER DEO 0W40	DMOSZ0030	205L	\$1,325.00
	DMOSZ0016	20L	\$136.00
	DMOSZ0005	4X4L	\$27.95
FULL SYNTHETIC SUPER DEO 5W40	DMOSZ0033	205L	\$1,260.00
	DMOSZ0018	20L	\$129.95
	DMOSZ0008	4X4L	\$27.95
SUPER DEO 10W30	DMORZ0084	205L	\$731.56
	DMORZ0045	20L	\$78.95
	DMORZ0018	4X4L	\$15.95
FULL SYNTHETIC ULTRA-SYN 75W90 API GL-5 AUTOMOTIVE GEAR OIL	GOOSZ0017	205L	\$2,140.00
	GOOSZ0006	20L	\$215.75

CALL MAXIM DIRECT PARTS LINES:		
THUNDER BAY 807.344.5834	WINNIPEG (TRUCK PARTS) 204 790.6575	WINNIPEG (TRAILER PARTS) 204 790.6597
BRANDON 204 725.4580	REGINA 306 721.0006	SASKATOON 306 657.5615
PRINCE ALBERT 306 922.5833	CALGARY 403 571.1144	EDMONTON 780 413.6261

MAXIM PARTNER HIGHLIGHT

MAXIM PARTNERS HIGHLIGHT

THE RIGHT TOOL FOR THE JOB

Crimper, Cutter and Cable Stripper



4-230	Ratcheting crimper	\$97.61
4-101	Heavy duty handheld cable cutter	\$77.53
4-221	Cable stripper	\$41.49
12-90003	Nylon tube cutter - economy	\$21.56

QWIK-FIT™ Tubing Release Tool



12-90005	QWIK-FIT™ tubing release tool	\$57.43
-----------------	-------------------------------	----------------

- Designed to push and connect tubing to fittings in hard to reach places such as under the dashboard
- Accommodates 1/8 in. and 1/4 in. sized fitting

Torches



4-054	Mini-jet torch, blister pack	\$17.31
4-057	Professional torch, box	\$82.75

- Refillable tank
- Meets Consumer Product Safety Commission 16CFR Part 1212 - Safety Standard for Multi-Purpose Lighters (Child Resistance)

6 & 7-Way Plug & Socket Brush



4-121	7-way plug and socket brush	\$42.72
4-122	6-way plug and socket brush	\$37.13

- Stainless steel bristles for durability
- Perfect for glove box or tool box

12070 BURKE STREET, SANTA FE SPRINGS, CA 90670
800.423.4512 FAX 800.597.7757

PHILIPS

CALL MAXIM DIRECT PARTS LINES:

THUNDER BAY
807.344.5834

BRANDON
204.725.4580

PRINCE ALBERT
306.922.5833

WINNIPEG (TRUCK PARTS)
204.790.6575

REGINA
306.721.0006

CALGARY
403.571.1144

WINNIPEG (TRAILER PARTS)
204.790.6597

SASKATOON
306.657.5615

EDMONTON
780.413.6261

MAXIM PARTNER HIGHLIGHT



Delo[®]
Let's go further.[®]



FEATURE SPECIALS:



DELO 400 XLE SAE 10W-30
PART # ZJB257000464

\$20³⁵



DELO 400 XLE SAE 10W-30
PART # ZJB257000428

\$91⁹⁹

GO FURTHER WITH SUPERIOR PERFORMANCE.

CALL MAXIM DIRECT PARTS LINES:

THUNDER BAY
807.344.5834

BRANDON
204 725.4580

PRINCE ALBERT
306 922.5833

WINNIPEG (TRUCK PARTS)
204 790.6575

REGINA
306 721.0006

CALGARY
403 571.1144

WINNIPEG (TRAILER PARTS)
204 790.6597

SASKATOON
306 657.5615

EDMONTON
780 413.6261

MAXIM PARTNER HIGHLIGHT

K32 Dual Pilot Fan Clutch



Replacement Fan Clutch Repair Kits for KYSOR® K26RA, K30RA and K32RA

Benefit from Horton's industry-leading customer service and quality, even if you are running its competitors' fan drives in your fleet.

- Dual pilot for reduced inventory and complete application coverage
- Two-piece liner design for quick repairs
- Superior liner material for longer life and reliability

Count on Horton to not only provide the reliable, durable products you need, but to deliver them on time



Rear-Air Fan Clutch

Horton # 9908504

Replaces #

1090-09650-01

1090-09750-01

8801X

8801N

\$454.88

DM Advantage®

DMA Two-Speed Quick Kits are used to upgrade legacy technology On/Off and Two-Speed Fan Drives to DM Advantage technology. They are also used to repair DM Advantage Two-Speed Fan Drives. They offer the industry's smoothest fan drive engagement and are proven in millions of miles of OEM applications.

- **Long life**
 - Double-row angular contact (DRAC) bearing
 - Carbon tip, double O-ring cartridge seals
 - Fail-safe design
- **Reduced and easier maintenance**
 - Long-wearing friction liner
 - Larger friction liner viewing ports
- **Faster and easier installation**
 - Pre-assembled components
 - Everything needed to completely rebuild fan drives
- **Reliable operation**
 - OEM-Approved
 - Latest magnet design



DMA Two-Speed Quick Kit: Q995582 (2.56" Pilot) \$956.20

DMA Two-Speed Quick Kit: Q995617 (5.00" Pilot) \$984.04

CALL MAXIM DIRECT PARTS LINES:

THUNDER BAY

807.344.5834

BRANDON

204 725.4580

PRINCE ALBERT

306 922.5833

WINNIPEG (TRUCK PARTS)

204 790.6575

REGINA

306 721.0006

CALGARY

403 571.1144

WINNIPEG (TRAILER PARTS)

204 790.6597

SASKATOON

306 657.5615

EDMONTON

780 413.6261

CONTACT US

LOCATIONS NATION-WIDE

BRITISH COLUMBIA

Vancouver
920 Derwent Way,
Annacis Island
P. 604.540.2400

Surrey
19011 96 Ave
P. 604.635.1521

ALBERTA

Calgary
6707 - 84th St SE
P. 403.571.1275

Edmonton
13240 - 170th St NW
P. 780.448.3830

SASKATCHEWAN

Regina (Main)
475 Henderson Dr
P. 306.721.9700

Regina Trailers
B-385 Henderson Dr
P. 306.721.1662

Prince Albert, SK
Highway #2 S
P. 306.922.1900

Saskatoon
3250 Idylwyld Dr N
P. 306.657.5600

MANITOBA

Winnipeg Trucks
HEAD OFFICE
1860 Brookside Blvd
P. 204.790.6599

Winnipeg Trailers
580 Oakpoint Hwy
P. 204.790.6500

Winnipeg Body Shop
& Used Parts
600 Oakpoint Hwy
P. 204.790.6580

Winnipeg
South Side Service
45 Lowson Cres
P. 204.925.7080

Winnipeg
Tereck Diesel
1655 Dugald Rd
P. 204.654.9646

Brandon
225 Middleton Ave
P. 204.725.4580

ONTARIO

Mississauga
1280 Shawson Dr
P. 905.564.5955

Thunder Bay
125 Conservation Rd
P. 807.344.5834

QUÉBEC

Ville D'Anjou
11300 rue Colbert
T. 514.354.9140

Dorval
1725 chemin St. Francois
T. 514.684.6765

TO UPDATE OR CANCEL FUTURE MAILINGS

To make changes to future Maxim Flyer mailings – or if you wish to cancel future mailings – please mark changes directly on the label below and email or fax a copy of the changes to:

email: webinfo@maximinc.com

fax: 204.632.4895

While we strive for accuracy in product descriptions and pricing, we will not be held responsible for technical or typographical errors which may appear in this Flyer. In the event that there is a discrepancy between the descriptions and/or pricing contained in Maxim's pricing system and those indicated on this Flyer, the information in Maxim's pricing system will prevail. Prices are subject to availability. Prices are subject to change without notice. All taxes are extra. We reserve the right to limit quantities. To make changes, additions or deletions to your mailing information contained below, please e-mail us at webinfo@maximinc.com



BOX 42, GRP. 200, R.R. 2
1860 BROOKSIDE BLVD.
WINNIPEG, MB R3C 2E6
www.maximinc.com

CANADA		POSTES
POST		CANADA
Postage paid		Port payé
Addressed Admail		Médiaposte avec adresse
7279091		