

FIRST NATIONS EQUIPMENT CATALOGUE



MA  IM
TRUCK & TRAILER

SINGLE AXLE SEPTIC TRUCKS

- New International MV607 4x2
- Cummins B6.7 Engine
- Allison Auto Transmission
- 240 HP
- 1600 Gallon Vacuum Tank configurations available
- Hydraulic brakes
- 1/4" Round steel construction
- Full length fenders
- PTO driven Wallenstein 150 CFM pump
- Heated load and dump valves
- 20' suction hose included



View our walkaround video at
youtube.com/Maximinc

**CALL FOR
PRICING &
AVAILABILITY**

**AOR Restrictions
May Apply.*

WE OFFER FIRST NATIONS FINANCING

Take advantage of Maxim Truck & Trailer's purchasing power to get the best financing rates and options for your new or used truck or trailer. Financial services are also available on existing equipment you may own, or for financing large unexpected repairs. Our services are available in British Columbia, Alberta, Saskatchewan, Manitoba, and Ontario.

Maxim's on-site Finance Professionals know truck and trailer financing. They can work with financial partners who specialize in heavy equipment financing, and they understand the unique First Nations requirements. They will choose lenders based on your unique situation to get you the best rate available for your needs. All transactions are completed onsite so approvals can be offered fast. With customized financing solutions, Maxim can create a finance plan that works for you that is competitive, flexible, and convenient.

Maxim also offers a full complement of insurance options to make sure you're covered. Contact one of our Finance Professionals for more information.

***We offer financing on all equipment
featured in this catalogue.***

Lindsey Fennell

BC/Alberta/Manitoba/Ontario
1860 Brookside Blvd., Winnipeg, MB R3C 2E6
Tel: (204) 790-6595 Fax: (204) 694-2302
Email: lfennell@maximinc.com

Cheryl Rathgaber

Saskatchewan
475 Henderson Dr., Regina, SK S4P 3C2
Tel: (306) 721-1654 Fax: (306) 721-3993
Email: crathgaber@maximinc.com

TANDEM AXLE SEPTIC TRUCKS

- New International HV607 6X4
- Cummins L9 engine (350) HP
- Allison (Auto) transmission (6 speed)
- Air brakes
- 16,000 lbs front axle capacity
- 40,000 lbs rear axle capacity
- 4-Way rear lockup
- 2,700-3,000 Gallon Septic Tank Heated



View our walkaround video at
youtube.com/Maximinc

**CALL FOR
PRICING &
AVAILABILITY**

**AOR Restrictions
May Apply.*

SINGLE AXLE WATER TRUCKS

- New International MV607 4x2
- Cummins B6.7 Engine
- Allison Auto Transmission
- 240 HP
- Up to large capacity 2,000 gallon "Food Grade Liner" tank
- Hydraulic brakes
- Stainless fenders
- Steps and ladder for tank access
- Heated pump compartment with insulated walls and light
- 30,000 BTU Heater
- Hydraulic driven pump
- Electric hose reel
- Work light

**CALL FOR
PRICING &
AVAILABILITY**

**AOR Restrictions
May Apply.*



View our walkaround video at
youtube.com/Maximinc

TANDEM AXLE WATER TRUCKS

- New International HV607 6x4
- Cummins L9 engine
- 350 HP
- Allison (Auto) transmission
- 6 speed
- Air brakes
- 12,000 lbs front axle capacity
- 40,000 lbs rear axle capacity
- 4-Way rear lock-up
- 2,400-3,000 Gallon Potable Water Tank

**CALL FOR
PRICING &
AVAILABILITY**

**AOR Restrictions
May Apply.*



View our walkaround video at
youtube.com/Maximinc

LIGHTER DUTY GARBAGE TRUCKS

- New International CV
- True Commercial Grade
- International 6.6L diesel engine (350 HP)
- Allison Auto 6 speed Transmission
- Hydraulic Brakes
- 7,500/15,500 lb axle capacity
- Traction Control & Rear lockup
- 4x4 and 4x2 models available
- Single or quad cab models
- Heavy GVW up to 22,900 lbs
- 16 cubic yard side loading refuse body
- Liquid tight tailgate
- Quick tipping hoist & self locking tailgate
- Unique packer design minimizes moving parts and maintenance cost
- Lowest loading height in its class



**CALL FOR
PRICING &
AVAILABILITY**

**AOR Restrictions
May Apply.*

TANDEM AXLE GARBAGE TRUCKS

- New International HV507 6x6
- Cummins L9 Engine
- 330 HP
- 18,000/46,000 axle capacity
- GVWR 58,000 lbs
- Allison Auto 6 speed Transmission
- Air Brakes
- 32 cubic yards automated side loader
- Fully automatic tailgate locks
- Rear camera bracket and flood lights - reverse activated
- Chassis frame-mounted oil tank with level / temperature gauge and suction shut-off valve

**CALL FOR
PRICING &
AVAILABILITY**

**AOR Restrictions
May Apply.*



LIGHTER DUTY DUMP TRUCKS

- New International CV
- International 6.6L engine (350 HP)
- Allison auto transmission (6 speed)
- Hydraulic brakes
- 7,500/15,500 lb axle capacity
- Traction Control rear lockup
- 4 wheel drive option
- Quad cab option





Dump Body Options Include:

- 12-14 ft Dump Boxes
- 12-48" High Sides
- 2-Piece Swing Out End Gates or 1-piece Tailgate
- Dura Flip Black Mesh Tarp System
- Underbody Double Acting Hoist with Electric Hydraulic Pump System

SINGLE AXLE DUMP TRUCKS

- New International MV607 4x2
- Cummins B6.7 Engine
- 240 HP
- Allison (Auto) Transmission

Boxes available include:

- Flip down sides (landscape boxes)
- Regular 10'-14' gravel boxes
- High refuse cube/snow boxes



**CALL FOR
PRICING &
AVAILABILITY**

**AOR Restrictions
May Apply.*

TANDEM AXLE DUMP TRUCKS

- New International HV607 6x4
 - Cummins Engine
 - Allison Auto Transmission
 - Up to 450 HP
 - Driver-first new cab design
 - Best in class HVAC performance
 - 3 piece hood design
 - Sloped hood option
 - Lift axles available
- Boxes available include:**
- Michel's tarp
 - 15 ft box with pintle hitch

**CALL FOR
PRICING &
AVAILABILITY**

**AOR Restrictions
May Apply.*



View our walkaround video at
youtube.com/Maximinc

SINGLE AXLE PLOW TRUCKS

- New International MV truck
- Single Axle
- Allison Auto 6-Speed Transmission
- Hydraulic Brakes
- 7,500 - 12,000 lbs front axle capacity
- 15,500 - 23,000 lbs rear axle capacity
- Traction control rear lockup

**CALL FOR
PRICING &
AVAILABILITY**

**AOR Restrictions
May Apply.*



LIGHTER DUTY PLOW TRUCK

- New International CV
- True Commercial Grade
- International 6.6L diesel engine
- 350 HP
- Allison Auto 6 speed Transmission
- Hydraulic Brakes
- 7,500/15,500 lb axle capacity
- Traction Control & Rear lockup
- 4x4 and 4x2 models available
- Single or quad cab models
- 12 foot Landscaper Dump Body Complete with Hitch Package
- Removable Sander optional
- 10' Plow with Snow Deflector and Plow Shoes
- In cab controls



View our walkaround video at
youtube.com/Maximinc

FIRE TRUCKS

- International HV + MV Models
- Allison Auto Transmission
- Various Cab Configurations
- 1,000-2,000+ Gallon Pumpers

We provide First Nations Fire Trucks chassis to Canada's pre-eminent Fire Truck Body Builders. Call us today for a referral using the number at the bottom.



View our walkaround video at
youtube.com/Maximinc

TANDEM END DUMP TRAILERS

- RTAC Compliant
- 29 Cubic Yard Capacity
- New Design - Front & Tailgate
- Aluminum Side Trim Package
- LED Lighting
- Hendrickson Air Ride Suspension
- Light Weight Hubs & Drums
- 11R22.5 Tires
- Michel's Manual Mesh Cable Tarp with 12" Hoops

**CALL FOR
PRICING &
AVAILABILITY**

**AOR Restrictions
May Apply.*



TRIDEM END DUMP TRAILERS

- RTAC Compliant
- 31 Cubic Yard Capacity
- New Design
- Aluminum Side Trim Package
- LED Lighting
- Hendrickson Air Ride Suspension
- Light Weight Hubs & Drums
- 11R22.5 Tires
- Michel's Manual Mesh Cable Tarp with 12" Hoops



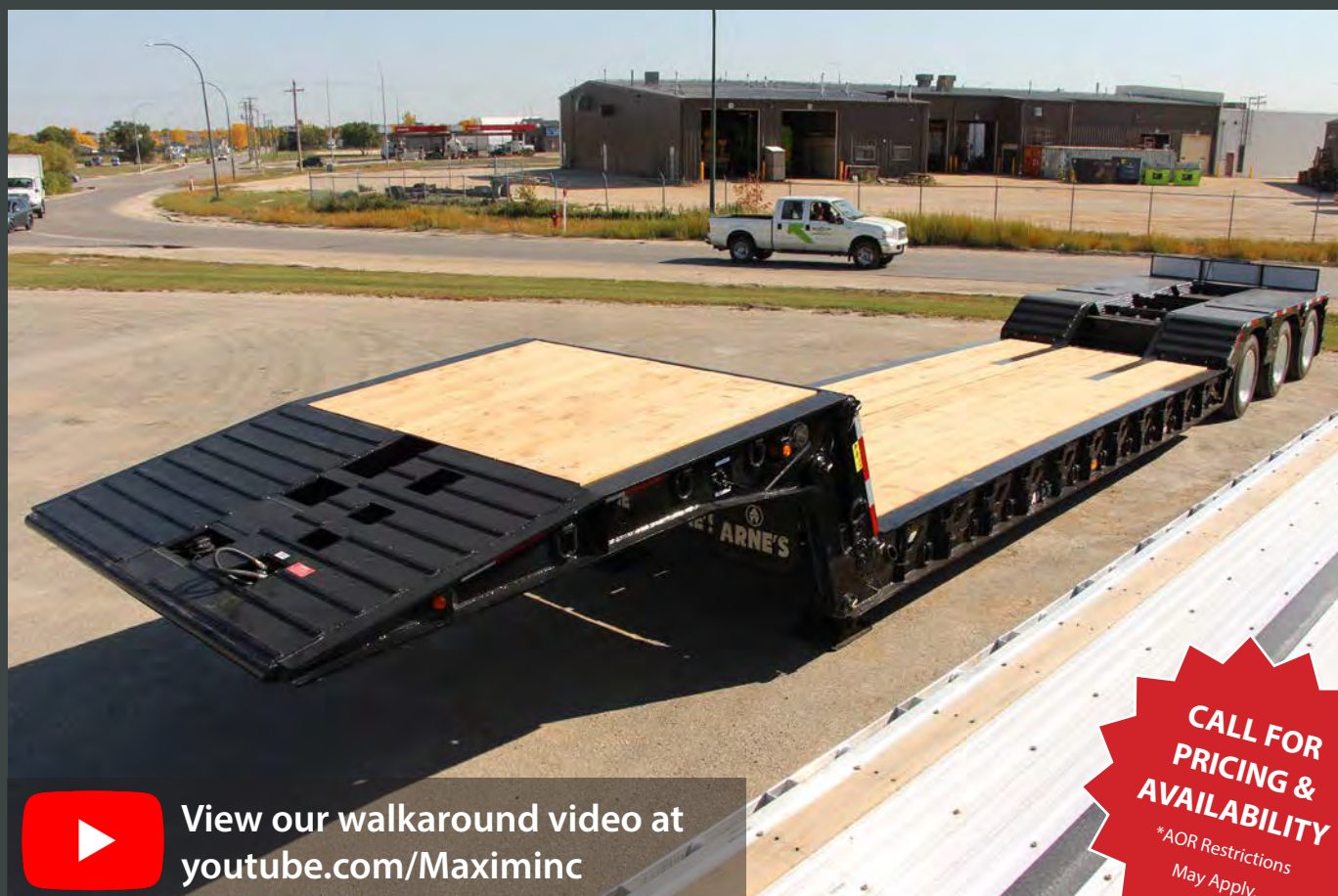
TRIDEM SIDE DUMP TRAILERS

- NEW Design
- RTAC Compliant
- 30 Cubic Yard Capacity
- Hardox 450 Floor and Walls
- Michel's Mesh Electric Side Kicker Tarp system
- Holland Mark V Two Speed Dolly Legs
- LED Lighting
- Hendrickson Air Ride Suspension
- Light Weight Hubs and Drums.
- 11R22.5 Tires



LOWBED TRAILERS

- 55-Ton Double Drop Removable Neck
- Construction: 4 "I" Beam Cambered T-1
- Overall length: 53' (Nominal)
- Deck Length: 24' (288"), Over All Width: 9' (108"), Deck Height 30"
- Road clearance 10"
- Hydraulic Removable with Stinger
- Adjustable Neck Height
- Decking: 2 1/2" Fir
- 6 "H" Pockets on Each Side of Main Deck
- Hendrickson Air Ride
- LED with Strobes on Rear
- Pull Out Lights for Wide Load with Flag Holders
- 11R22.5
- Full Fenders on Neck, Aluminum



View our walkaround video at
youtube.com/Maximinc

**CALL FOR
PRICING &
AVAILABILITY**

*AOR Restrictions
May Apply.



**CALL FOR
PRICING &
AVAILABILITY**

**AOR Restrictions
May Apply.*

SCHOOL BUS (DIESEL)

- IC CE Series School Bus
- Cummins B 6.7 diesel engine
- Engine - 265 HP/550 ft-lb Torque
- Allison Auto Transmission
- Traction Control
- Rear Air Ride Suspension
- Air or electric operated stop sign, crossing arm, entrance door
- Meets CSA and Manitoba standards
- 36-77 passenger sizes with wheelchair lifts available



View our walkaround video at
youtube.com/Maximinc

CONTACT US

LOCATIONS NATION-WIDE

BRITISH COLUMBIA

Vancouver
920 Derwent Way,
Annacis Island
P. 604.540.2400

Surrey
19011 96 Ave
P. 604.635.1521

ALBERTA

Calgary
6707 - 84th St SE
P. 403.571.1275

Edmonton
13240 - 170th St NW
P. 780.448.3830

SASKATCHEWAN

Regina (Main)
475 Henderson Dr
P. 306.721.9700

Regina Trailers
B-385 Henderson Dr
P. 306.721.1662

Prince Albert, SK
Highway #2 S
P. 306.922.1900

Prince Albert Trailers
67 N Industrial Dr
P. 306.922.1900

Saskatoon
3250 Idylwyld Dr N
P. 306.657.5600

MANITOBA

Winnipeg Trucks
HEAD OFFICE
1860 Brookside Blvd
P. 204.790.6599

Winnipeg Trailers
580 Oakpoint Hwy
P. 204.790.6500

**Winnipeg Body Shop
& Used Parts**
600 Oakpoint Hwy
P. 204.790.6580

Winnipeg
South Side Service
45 Lowson Cres
P. 204.925.7080

Winnipeg
Tereck Diesel
1655 Dugald Rd
P. 204.654.9646

Brandon
225 Middleton Ave
P. 204.725.4580

ONTARIO

Thunder Bay
125 Conservation Rd
P. 807.344.5834

QUÉBEC

Ville D'Anjou
11300 rue Colbert
T. 514.354.9140



BOX 42, GRP. 200, R.R. 2
1860 BROOKSIDE BLVD.
WINNIPEG, MB R3C 2E6
www.maximinc.com