

CHAMPION SHEET-AND-POST DRY



For dry freight carriers who value safety and efficiency, the Great Dane Champion Sheet and Post is the most innovative and versatile trailer design in the industry. At Great Dane, we have an intimate understanding of our customers' needs. We combine high quality components, innovative technology, and extraordinary aftermarket support for the greatest return on your investment.

Interior Lining Options

Multiple interior lining options allow for maximum interior width, durability, cargo securement plus weight and maintenance savings.



PunctureGuard Lining

Incredibly thin, yet extremely puncture-resistant, PunctureGuard linings and scuffbands have the strength of steel but absorb energy like wood at only a fraction of the weight.



SSL Galvalume Steel Lining

Patented SSL lining is four times more corrosion-resistant than galvanized steel and provides extreme durability. Puncture strength is nearly 6x greater than .25" plywood and more than 4x greater than MDPE plastic. Also now available in white for added brightness.



Thermoplastic Lining

White, durable plastic lining provides superior puncture-resistance and a snag-free, non-plywood interior. Simple sheet-and-post construction eliminates the need for special repairs.



Insulated

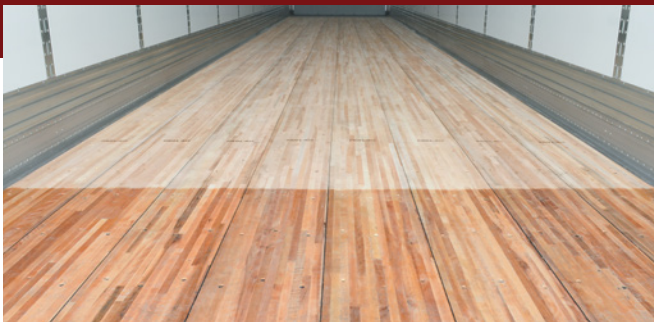
The semi-insulated interior option is the perfect solution for temperature-sensitive loads. Options include foam block or walls designed with Great Dane's foam-press insulation and a thermoplastic liner. Features from Everest reefers and Champion dry vans have been combined to offer semi-insulated properties along with strength and durability.

Visit GreatDane.com to learn more about the CHAMPION and Great Dane's full line of trailers, truck bodies, and innovations.



Great Dane

CHAMPION SHEET-AND-POST



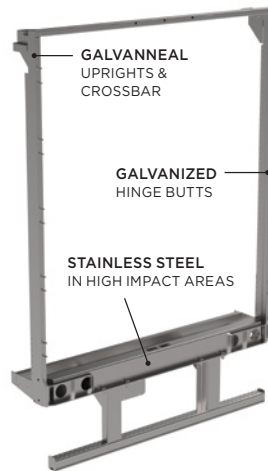
Durable Floor System

The durable floor system provides strength in key high stress areas. A 1.38" laminated hardwood floor is secured with 2 screws in an alternating pattern and is available with 3 screws for added strength. Composite floor options provide higher floor ratings while saving weight.

Floors can be further protected, partially at the rear or full length, with an optional floor treatment that protects hardwood against the harshest operating conditions by penetrating the surface. This creates a virtually waterproof barrier of protection on the topside of the floor.

An optional hot-melt polyurethane reactive undercoating can be used on the underside of trailer floors, serving as an additional moisture barrier to increase durability and reduce floor maintenance costs.

KEY FEATURES



EnduroGuard Rear Frame

The EnduroGuard rear frame provides an effective barrier against corrosion that delivers enhanced durability and enduring appearance throughout the life of the trailer. The structurally superior rear frame design resists scaling, flaking and discoloration.

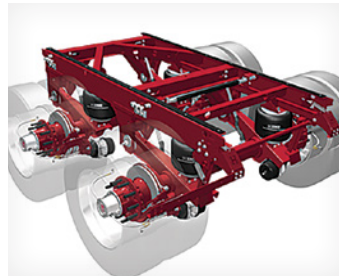
Enhanced Rear Impact Guard Design

Great Dane's **TOUGH**Guard awarded rear impact guard is standard on all Great Dane trailer models, increasing safety in rear-impact collisions. Due to the rear impact guard's bolt-on design, a retrofit option is available to upgrade rear impact guards on 2007 and later models. The retrofit can be installed easily at any authorized Great Dane service center.



Roof Design

Features a tension-mounted aluminum roof sheet permanently bonded to galvanneal, anti-sag roof bows, and then secured with two fasteners to the side rails for reinforcement. A puncture-resistant translucent fiberglass roof sheet is also available.



Hendrickson ULTRAA-K Sliding Suspension

Nearly 100 pounds lighter than comparable slider systems and featuring Zero Maintenance Damping technology, this suspension combines lightweight with toughness and is backed by a limited 10-year structural corrosion warranty.



Accuride Accu-Lite Steel Wheels

The new Accuride Accu-Lite 65-pound steel wheel comes standard on the Champion. These wheels allow for increased payload and fuel savings without reducing load rating.



Stemco PPS Wheel End System

Stemco's Platinum Performance Plus Wheel End System features an exclusive 8-year limited warranty and includes Guardian HP oil seals, PRO-TORQ spindle nuts, and integrated Sentinel hub caps.

OPTIONAL FEATURES



Double Decking

The innovative Double Dex option creates a second deck to accommodate additional cargo by using captive beams within a recessed track.

Pup Trailer

Great Dane offers a complete line of dry freight 28-foot trailers, including composite plate, plastic-lined and plywood-lined versions. PunctureGuard lining and scuffbands are also available. Options on the trailers include a variety of doors and rear frames, multiple floor linings, and Double Dex.

